

# AB5656T2

Audio Player Microcontroller

Versions: 0.0.1  
2023.02.07



## Declaration

Copyright © 2023, [www.bluetrum.com](http://www.bluetrum.com).

All Rights Reserved. No Unauthorized Distribution.

Bluetrum reserves the right to make changes without further notice to any products herein to improve reliability, function or design.

For further information on the technology, product and business term, please contact Bluetrum Company.

For sales or technical support, please send email to the address:

Sales: [sales@bluetrum.com](mailto:sales@bluetrum.com)

Technical: [project@bluetrum.com](mailto:project@bluetrum.com)

**Revision History**

Date	Version	Comments	Revised by
2023-02-07	0.0.1	First draft	Leo

# Table of Contents

TABLE OF CONTENTS .....	2
<b>1 PRODUCT FEATURES.....</b>	<b>3</b>
<b>2 PACKAGE DEFINITION.....</b>	<b>4</b>
2.1 PIN ASSIGNMENT .....	4
2.2 PIN DESCRIPTIONS .....	5
<b>3 CHARACTERISTICS.....</b>	<b>7</b>
3.1 PMU PARAMETERS .....	7
3.2 IO PARAMETERS .....	8
3.3 AUDIO DAC PARAMETERS.....	8
3.4 AUDIO ADC PARAMETERS.....	9
3.5 BT PARAMETERS.....	10
3.6 CURRENT PARAMETERS.....	10
<b>4 PACKAGE INFORMATION.....</b>	<b>11</b>

## 1 Product Features

### CPU and Flexible IO

- High performance 32bit RISC-V processor Core with DSP instruction
- RISC-V typical speed: 125MHz
- Program memory: internal OTP;
- Internal 113KB RAM for data and program
- Flexible GPIO pins with Programmable pull-up and pull-down resistors;
- Support GPIO wakeup or interrupt;

### Bluetooth Radio

- Compliant to Bluetooth 5.3 (QDID: 194248) ;
- TX output power +9dBm in MAX;
- RX Sensitivity with -91.7 @ Basic Rate;
- RX Sensitivity with -94.2 @EDR;

### Audio Interface

- Audio codec with 16bit mono DAC and 16bit mono ADC;
- Support flexible audio EQ adjust;
- Support Sample rate 8, 11.025, 12, 16, 22.05, 32, 44.1 and 48KHz;
- Mono MIC amplifier input;
- High performance mono audio ADC with 94dB SNR;
- High performance mono audio DAC with 102dB SNR, with headphone amplifier output;

### Peripheral and Interfaces

- Support Low power Touch Key;
- Three 32-bit timers;
- One multi-function 32-bit timers, support Capture and PWM mode;
- WatchDog;
- Three full-duplex UART;
- Sixteen Channels 10-bit SARADC;
- Build in PMU, such as Charger/Buck/LDO;

### Package

- QFN20 3\*3;

### Temperature

- Operating temperature: -40°C to +85°C;
- Storage temperature: -65°C to +150°C;

### Supports

- A2DP/AVDTP/AVRCP/RFCOMM/HFP/HSP/SPP/HID

**2 Package Definition**

**2.1 Pin Assignment**

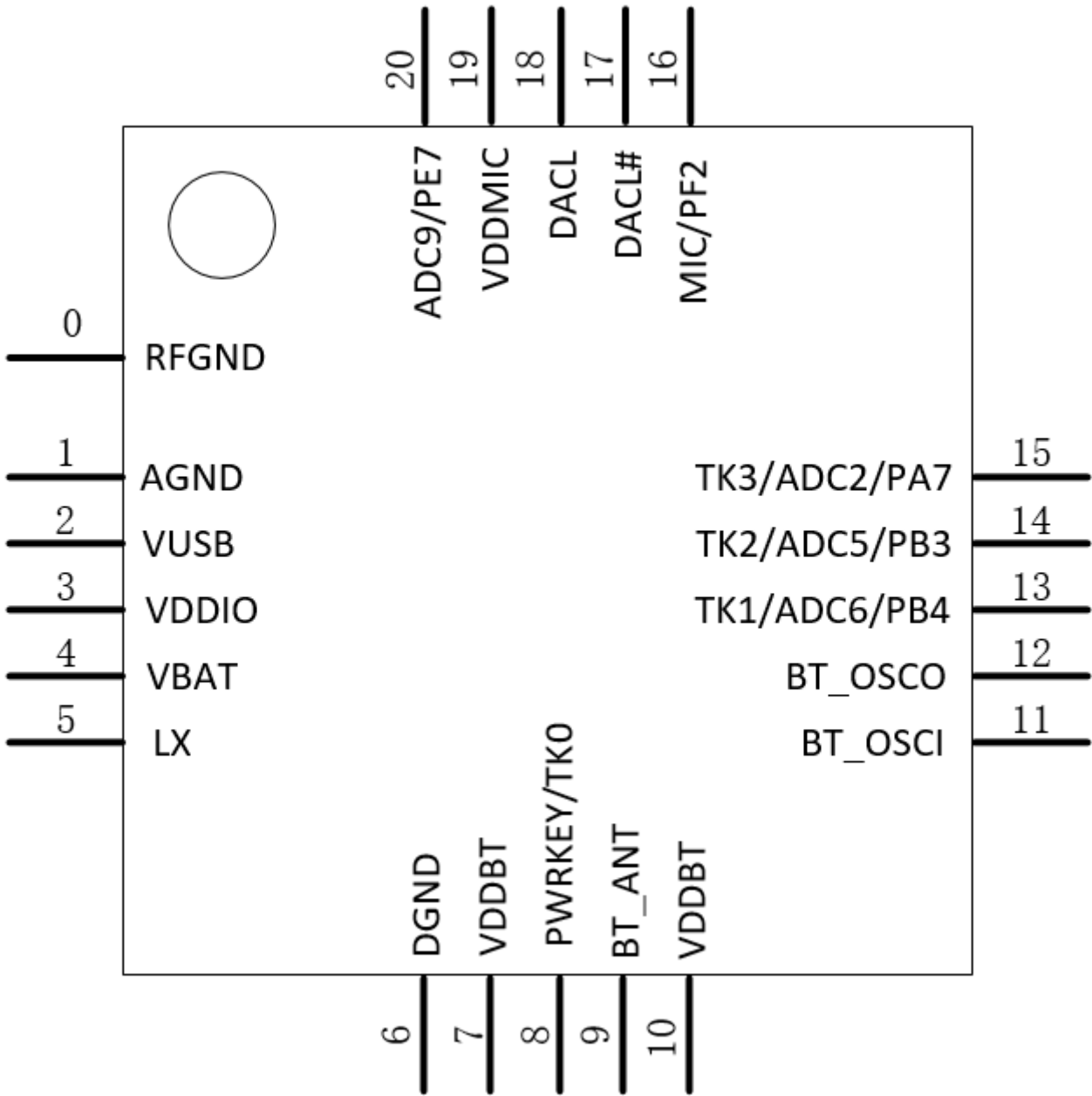


Figure 2-1 Pin assignment for QFN20

## 2.2 Pin Descriptions

**Table 2-1 QFN20 pin description**

Pin No.	Name	Type	Function
0	RFGND	GND	BT RF Ground
1	AGND	GND	DAC Ground
2	VUSB	PWR	VUSB power input
3	VDDIO	PWR	VDDIO Power Output
4	VBAT	PWR	VBAT Power Input
5	LX	PWR	Buck inductor connect pin
6	DGND	GND	Digital Ground
7	VDDBT	PWR	BT Power
8	PWRKEY/TK0	A	Power key input TK0
9	BT_ANT	A	BT ANT
10	VDDBT	PWR	BT Power
11	BT_OSCI	A	26M OSC input
12	BT_OSCO	A	26M OSC output
13	PB4/ADC6/TK1	I/O	ADC6 SDCMD-G2 SPI0CLK-G3 RX0-G3 HSTRX-G8 FMOSC-G4 PWM0-T3 TMR3CAP_G4 PB4
14	PB3/ADC5/TK2	I/O	ADC5 SDDAT0-G1/G2 AUXL1 SPI0DO-G3 TX0-G3 HSTRX-G3 FMOSC-G3 PWM2-T3 TMR3CAP_G3 PB3
15	PA7/ADC2/TK3	I/O	ADC2 SDCLK-G1/G2 AUXL3 TX0-G1 TX1-G1 HSTRX-G1

			FMOSC-G1 PWM1-T3 TMR3CAP_G1 PA7
16	PF2/MIC	I/O	MIC ADC10 TX0-G7 TX2-G1 HSTRX-G5 FMOSC-G7 PF2
17	DACL#	A	DAC differential L#
18	DACL	A	DAC L
19	VDDMIC	PWR	MIC Power
20	PE7/ADC9	I/O	ADC9 AUXL2 TX0-G4 RX2-G1 HSTRX-G4 FMOSC-G6 TMR3CAP_G6 PE7

Note: I/O: Digital input/output; I : Digital input; A : Analog Pin; PWR: Power Pin; GND: Ground.

### 3 Characteristics

#### 3.1 PMU Parameters

Table 3-1 PMU voltage input Parameters

Sym	Characteristics	Min	Typ	Max	Unit	Conditions
VUSB	Charger Voltage input	4.6	5.0	5.5	V	
VBAT	Voltage input	3.0	3.7	4.5	V	

Table 3-2 3.3V LDO Parameters

Sym	Characteristics	Min	Typ	Max	Unit	Conditions
VDDIO	3.3V LDO voltage output	2.4	3.3	3.8	V	Light Loading condition
$\Delta$ VDDIO	Output Mismatch 1-sigma	-	12	-	mV	VDDIO=3.3v
ILOAD	Maximum output current	-	-	150	mA	@VBAT=3.6v
ISC	Short Circuit Current Limit	-	-	525	mA	@VBAT=3.8v

Table 3-3 1.25V LDO Parameters

Sym	Characteristics	Min	Typ	Max	Unit	Conditions
VDDBT	1.6V LDO voltage output	0.85	1.25	1.6	V	Light Loading condition
$\Delta$ VDDBT	Output Mismatch 1-sigma	-	12	-	mV	VDDBT=1.6v
ILOAD	Maximum output current	-	-	370	mA	@VBAT=3.0v
ISC	Short Circuit Current Limit	-	-	580	mA	@VBAT=3.8v

Table 3-4 1.1V LDO Parameters

Sym	Characteristics	Min	Typ	Max	Unit	Conditions
VDDCORE	1.2V LDO voltage output	0.7	1.1	1.45	V	Light Loading condition
$\Delta$ VDDCORE	Output Mismatch 1-sigma	-	5.7	-	mV	VDDCORE=1.1v
ILOAD	Maximum output current	-	-	230	mA	@VBAT=3.6v
ISC	Short Circuit Current Limit	-	-	700	mA	@VBAT=3.8v

Table 3-5 1.25V BUCK Parameters

Sym	Characteristics	Min	Typ	Max	Unit	Conditions
VDDCORE	1.2V LDO voltage output	0.85	1.25	1.6	V	Light Loading condition
$\Delta$ VDDCORE	Output Mismatch 1-sigma	-	6	-	mV	VDDBT=1.25v



Sym	Characteristics	Min	Typ	Max	Unit	Conditions
ILOAD	Maximum output current	-	-	366	mA	@VBAT=3.6v
ISC	Short Circuit Current Limit	-	-	366	mA	@VBAT=3.8v

### 3.2 IO Parameters

Table 3-6 I/O Parameters

IOTYPE1—Electrical Characteristics							
Symbol	Description	Related GPIO	Min	Typical	Max	Units	Conditions
VIL	Low-level input voltage		-0.3		1.27	V	VDDIO=3.3V
VIH	High-level input voltage		2.03		3.6	V	VDDIO=3.3V
Driver Ability 1	Output Driver Ability 1			32		mA	VDDIO=3.3V
Driver Ability 0	Output Driver Ability 0			8		mA	VDDIO=3.3V
RPUP0	Internal pull-up resistor 0		8	10	12	K $\Omega$	
RPUP1	Internal pull-up resistor 1		0.24	0.3	0.36	K $\Omega$	
RPUP2	Internal pull-up resistor 2		160	200	240	K $\Omega$	
RPDN0	Internal pull-down resistor 0		8	10	12	K $\Omega$	
RPDN1	Internal pull-down resistor 1		0.24	0.3	0.36	K $\Omega$	
RPDN2	Internal pull-down resistor 2		160	200	240	K $\Omega$	

IOTYPE4—Electrical Characteristics							
Symbol	Description	Related GPIO	Min	Typical	Max	Units	Conditions
VIL	Low-level input voltage		-0.3		1.27	V	VDDIO=3.3V
VIH	High-level input voltage		2.03		3.6	V	VDDIO=3.3V
Driver Ability	Output Driver Ability			8		mA	VDDIO=3.3V
RPUP	Internal pull-up resistor		8	10	12	K $\Omega$	
RPDN	Internal pull-down resistor		8	10	12	K $\Omega$	

### 3.3 Audio DAC Parameters

Table 3-7 Audio DAC Parameters differential mode

Sym	Characteristics	Min	Typ	Max	Unit	Conditions
SNR		-	102	-	dB	VCM cap=NC VDDDAC cap=NC with A-wt filter Output -4.98dBV

Sym	Characteristics	Min	Typ	Max	Unit	Conditions
						Fin=1KHz
THD+N		-	-92.4	-	dB	VCM cap=NC VDDDAC cap=NC with A-wt filter Output -4.98dBV with 32ohm loading Fin=1KHz
Output Range	Maximum output voltage	-	-2.3		dBVrms	32ohm Loading

Table 3-8 Audio DAC Parameters VCMBUF MODE

Sym	Characteristics	Min	Typ	Max	Unit	Conditions
SNR		-	94.67	-	dB	VCM cap=NC VDDDAC cap=NC with A-wt filter Output -9.9dBV Fin=1KHz
THD+N		-	-78.2	-	dB	VCM cap=NC VDDDAC cap=NC with A-wt filter Output -9.9dBV with 32ohm loading Fin=1KHz
Output Range	Maximum output voltage	-	-9.9		dBVrms	32ohm Loading

### 3.4 Audio ADC Parameters

Table 3-9 Audio ADC Parameters

Mode	Sym	Characteristics	Min	Typ	Max	Unit	Conditions
ADC Mode	SNR		-	92	-	dB	VCM cap=NC VDDMIC cap=1uF with A-wt filter Input -1dBV @ Fin=1KHz
	THD+N		-	-94.92	-	dB	
	Input Range	Maximum input voltage	-	-1	-	dBVrms	
external-RC PGA+ADC mode	PGA Gain		-6		42	dB	-6 / 0~42dB@step=3dB
	SNR		-	92	-	dB	VCM cap=NC

Mode	Sym	Characteristics	Min	Typ	Max	Unit	Conditions
	THD+N		-	-72.4	-	dB	VDDMIC cap=1uF with A-wt filter Input -1dBV @ Fin=1KHz PGA Gain=0dB
	Input Range	Maximum input voltage	-	-1	-	dBVrms	
internal-RC PGA+ADC mode	PGA Gain		-6		42	dB	-6 / 0~42dB@step=3dB
	SNR		-	66.8	-	dB	VCM cap=NC VDDMIC cap=1uF with A-wt filter Input -23dBV @ Fin=1KHz PGA Gain=0dB
	THD+N		-	-60.3	-	dB	
	Input Range	Maximum input voltage	-	-10	-	dBVrms	THD<-60dB @ Input voltage ≤-23dBV

### 3.5 BT Parameters

Table 3-10 BT Parameters

Characteristics	Min	Typical	Max	Unit	Conditions
Maximum Transmit Power	-	8	9	dBm	GFSK TX power
RMS DEVM	-	8	-	%	Maximum TX power 2-DH5 packet
Peak DEVM	-	20		%	
EDR Relative Transmit Power		-0.5		dB	
Sensitivity @ Basic Rate		-91.7		dBm	BER=0.1%, using DH5 packet
Sensitivity @ EDR		-94.2		dBm	BER=0.01%, using 2-DH5 packet

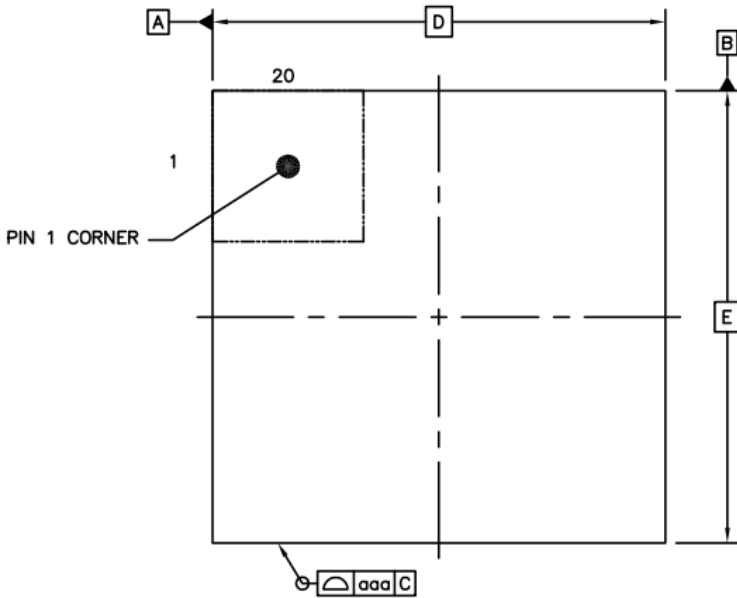
### 3.6 Current Parameters

Table 3-11 Current Parameters

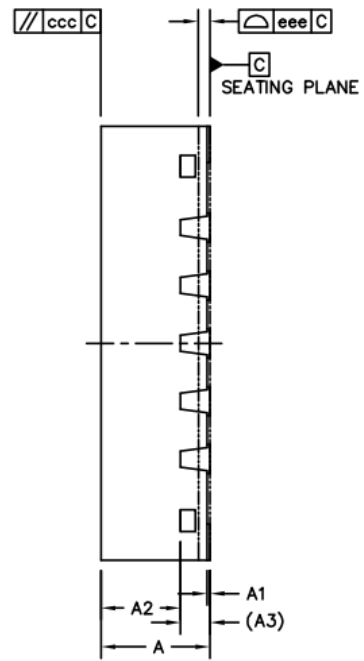
Sym	Characteristics	Min	Typ	Max	Unit	Conditions
IRTC	RTC mode current	-	3	-	μA	4.2V input, room temp. Without TouchKey
Sleep	Sleep current	-	450		μA	3.3V input, room temp Wake-up every 500ms to keep BT connecting

4 Package Information

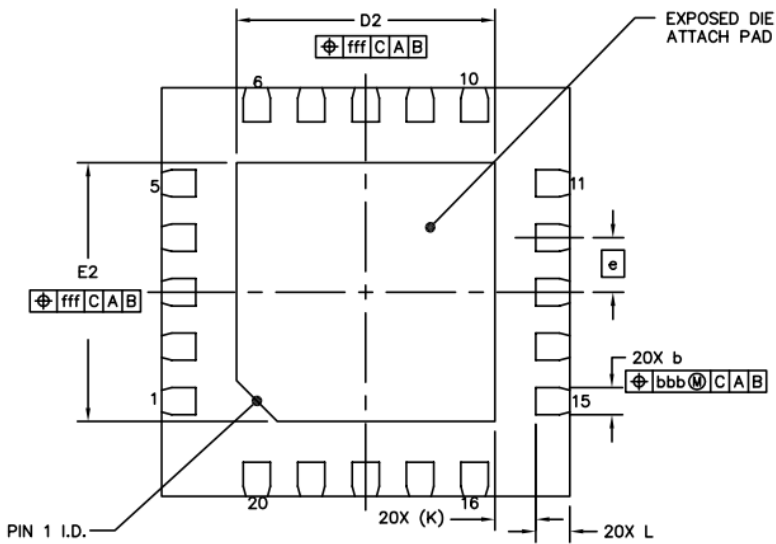
QFN3X3-20L(P0.4T0.75)



TOP VIEW



SIDE VIEW



BOTTOM VIEW

		<b>SYMBOL</b>	<b>MIN</b>	<b>NOM</b>	<b>MAX</b>
TOTAL THICKNESS		A	0.7	0.75	0.8
STAND OFF		A1	0	0.02	0.05
MOLD THICKNESS		A2	---	0.55	---
L/F THICKNESS		A3	0.203 REF		
LEAD WIDTH		b	0.15	0.2	0.25
BODY SIZE	X	D	3 BSC		
	Y	E	3 BSC		
LEAD PITCH		e	0.4 BSC		
EP SIZE	X	D2	1.8	1.9	2
	Y	E2	1.8	1.9	2
LEAD LENGTH		L	0.15	0.25	0.35
LEAD TIP TO EXPOSED PAD EDGE		K	0.3 REF		
PACKAGE EDGE TOLERANCE		aaa	0.1		
MOLD FLATNESS		ccc	0.1		
COPLANARITY		eee	0.08		
LEAD OFFSET		bbb	0.07		
EXPOSED PAD OFFSET		fff	0.1		



## Contact us

Address: 深圳市南山区沙河街道高发社区侨香路 4068 号智慧广场 A 栋 1301-1

E-mail: [info@bluetrum.com](mailto:info@bluetrum.com)

Website: [www.bluetrum.com](http://www.bluetrum.com)